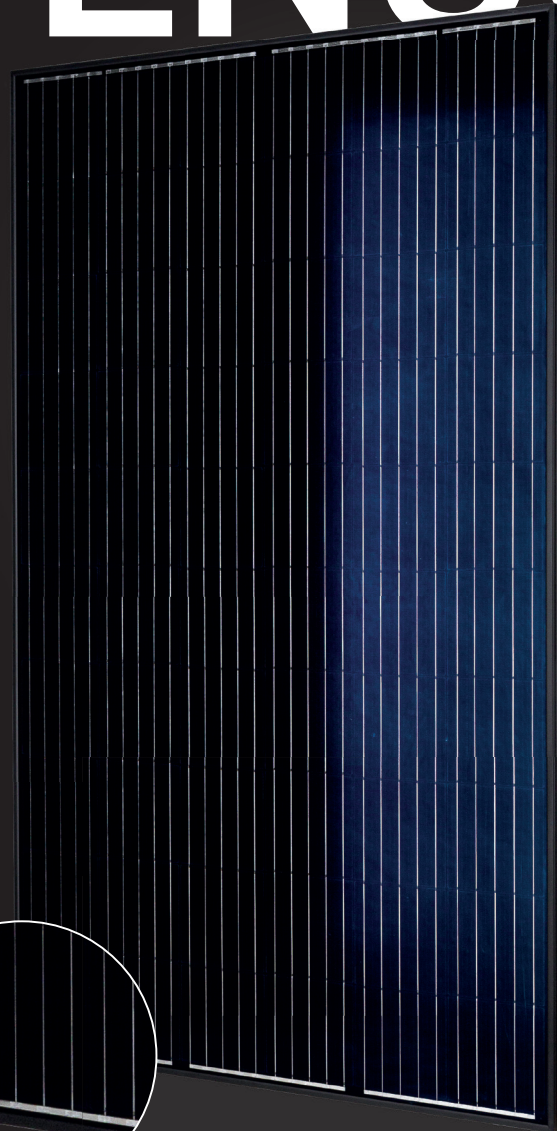


Monocrystalline 60 cells

VENUS



Guaranteed positive output tolerance of 0 ~ +5 Wp by single measuring



3.2mm anti-reflective glass



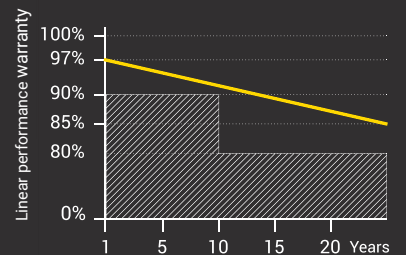
Maximum stability trough aluminium soft grip frame



Maximum 5400Pa snow load



15 years manufacturer's warranty
25 years linear performance guarantee



BLACK | BLACK

OUTPUT: 310 - 325 WATT

VENUS high efficiency monocrystalline 60 cell modules with PERC cells, grants high performance and conversion efficiency over 19 %. The cells are based on PERC technology and are rear passivated. VENUS black | black edition with black backsheet and black frame, combines visual attractiveness to high performance. The 35 mm black anodized aluminium frame combines robustness light weight and a 3.2 mm anti-reflective glass is optimizing the panel performance to solar irradiance.



power for a better world

STC	A-M310/60	A-M320/60	A-M325/60
Maximum Power (Pmax) (W)	310	320	325
Open Circuit Voltage (Voc) (V)	39.80	40.43	40.74
Short Circuit Current (Isc) (A)	10.05	10.19	10.26
Voltage at Maximum Power (Vmpp) (V)	32.56	33.13	33.40
Current at Maximum Power (Impp) (A)	9.55	9.66	9.74
Modul Efficiency (%)	18.77	19.37	19.68

STC (Standard Testing Condition): Irradiance 1000 W/m², Cell Temperature 25 °C, Spectra at AM 1.5

Test uncertainty for Pmax: ±3 %
Voc and Isc Tolerance: ±3 %

Electrical Parameters at NOCT	A-M310/60	A-M320/60	A-M325/60
Maximum Power (Pmax) (W)	229	237	241
Open Circuit Voltage (Voc) (V)	37.28	38.15	38.59
Short Circuit Current (Isc) (A)	7.94	8.02	8.06
Voltage at Maximum Power (Vmpp) (V)	30.57	31.31	31.67
Current at Maximum Power (Impp) (A)	7.49	7.57	7.61

NOCT (Nominal Operating Cell Temperature): Irradiance 800 W/m², Ambient Temperature 20 °C, Spectra at AM 1.5, Wind at 1 m/s

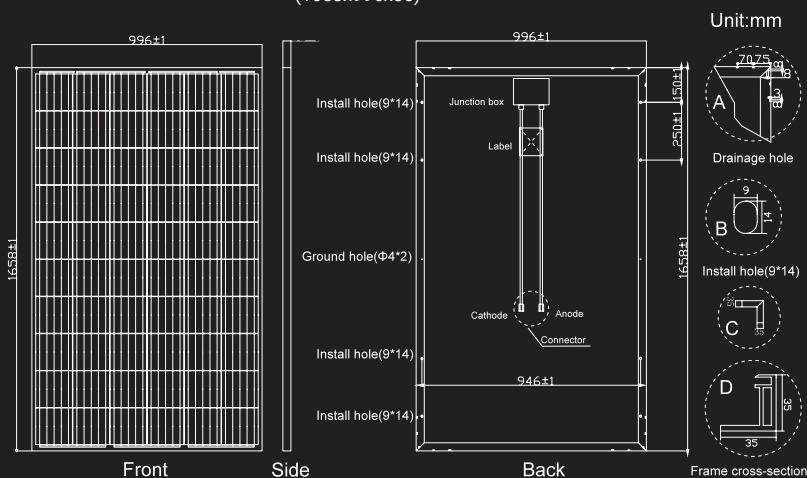
Temperature Characteristics	
Pmax Temperature Coefficients (W / °C)	-0.36 % / °C
Voc Temperature Coefficients (V / °C)	-0.29 % / °C
Isc Temperature Coefficients (A / °C)	+0.05 % / °C
Noct Nominal Operating Cell Temperature (°C)	45 ±2 °C

Operating Conditions	
Operating Module Temperature:	-40 °C ~ +85 °C
Maximum System Voltage:	1500 V
Maximum Series Fuse Rating:	20 A
Power Tolerance:	0 ~ +5 W
Maximum Static Load Front	5400 Pa tested 8000 Pa
Maximum Static Load Back	2400 Pa
Application Class	Class A

Specifications	
Cell Type	Mono G1 158.75
Weight	17.5 kg ±3 %
Dimensions	1658x996x35 mm (±2 mm)
Cable Cross Section Size	4 mm ² , cable approx 110 cm, QC4 compatible
No. of cells	60 (6x10)
Junction Box	IP67, 3 diodes
Frame	Black anodized aluminium
Front glass	3.2 mm high transmission, low iron, tempered glass

Packing Details	
Container Type	40'HC
No. of Pallets	28
Pieces per Pallet	30
Total quantity of modules	840

(1658x996x35)



I-V Curve: (A-M320)

